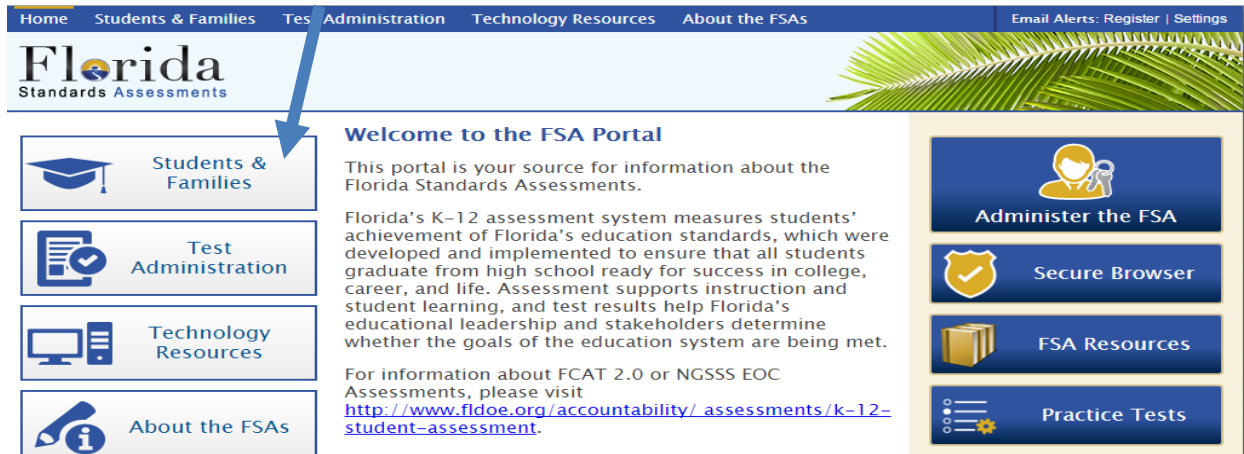




Dear Families:

The FSA Portal is your best source for information about the Florida Standards Assessments.

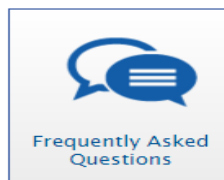
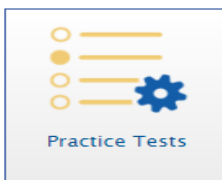
Go to: <http://www.fsassessments.org/> & Click “Students & Families”



Check out the “Practice Tests” & “Frequently Asked Questions” Sections

Welcome, Students and Families!

This page provides access to general information about resources.



Review the applicable “Paper-Based” and/or “Computer-Based” Practice Tests on the FSA Portal to familiarize yourself and your student with the various types and formats of test questions. The chart below shows which grade levels and subjects are Paper-Based vs. Computer-Based tests.

Helpful Resources

	Paper-Based	Computer-Based
Grades/Subjects	<ul style="list-style-type: none"> 3rd ELA/Math 4th Writing/Math 5th-7th Writing 5th & 8th Science 	<ul style="list-style-type: none"> 4th ELA 5th-7th ELA/Math 8th ELA/Writing/Math 9th-10th ELA/Writing EOCs

For more information regarding specific dates for FSA testing in Citrus County, please visit the Citrus County Schools homepage @ www.citrus.k12.fl.us. Once there, click on the “Calendars” Tab, and select “[2015-2016 Testing Grades Calendar K-12](#)”.